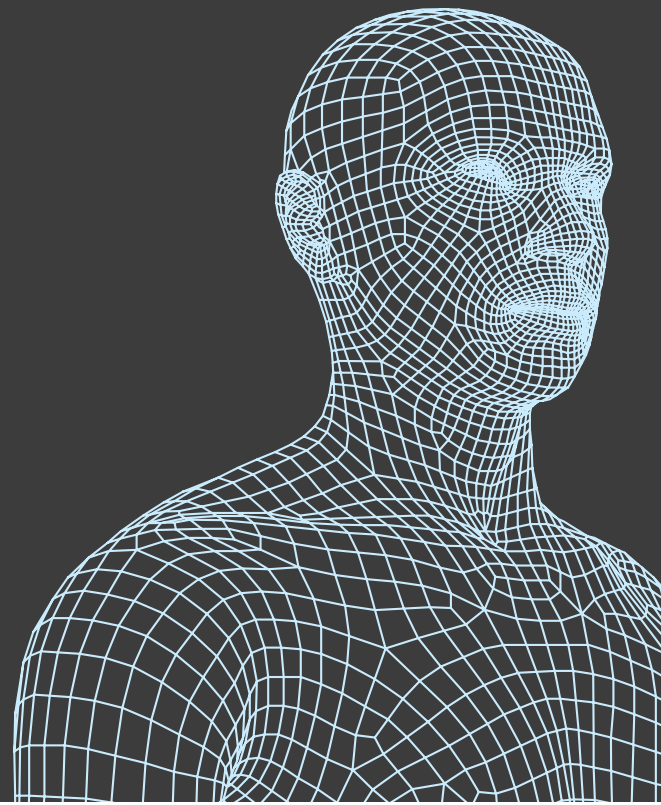


CREAFORM 3D BODY DIGITIZERS™

Gemini™

Creaform, a leader in 3D digitizing technology, now presents the **Creaform 3D Body Digitizers**, technology that has proven remarkably reliable for over fifteen years! The **Creaform 3D Body Digitizers** adapt to most surfaces and digitize the human body in full color in less than a second, producing results as realistic as a photograph!



THE **3D DIGITIZER GEMINI** FROM THE CREAFORM 3D BODY DIGITIZER LINE-UP IS **EASY TO USE AND FAST**, AND IT OFFERS **EXCELLENT RESOLUTION!** FURTHER, IT IS THE ONLY 3D DIGITIZER THAT CAN EFFICIENTLY DIGITIZE BOTH HUMAN BODIES AND OTHER OBJECTS. SUCH **VERSATILITY** MAKES IT AN IDEAL, AFFORDABLE TOOL!

Applications and Industries

The Gemini 3D digitizer works fast and efficiently, and the 3D models it generates can be used in a great number of applications, such as:

- | 3D stereo portraits
- | Medical imaging
- | Multimedia
- | Virtual reality
- | Study in ergonomics
- | Industrial design
- | Virtual archiving
- | And many others



Benefits

Ease of use	No prior experience required
Handiness	Can be installed on a table or mounted on a tripod
Speed	A 3D picture can be taken in a fraction of a second
Portability	The very compact format of the Gemini makes it very portable
Flexibility of use	The field of view of the Gemini allows taking very good quality 3D images of a head (SF) as well as taking 3D images of 2 people at the same time (MF)
Adapted acquisition technology	Can acquire most surfaces, even hair

Software

The acquisition software program **PCS** is supplied along with the Gemini digitizer in order to ensure the acquisition of the 3D data and to visualize the 3D models. This software also offers laser crystal engraving functions.

Compatible Software*

- | Autodesk 3D Studio Max, Maya and Softimage
- | LightWave
- | Cinema 4D
- | TopoGun
- | MudBox
- | And many others

Technical Specifications

	SF Model	MF Model
Field of view	460 mm x 340 mm (18.1 in x 13.4 in)	690 mm x 520 mm (27.2 in x 20.5 in)
Depth of field	450 mm (17.7 in)	650 mm (25.6 in)
Resolution X, Y	0.4 mm (0.02 in)	0.65 mm (0.03 in)
Resolution Z	0.2 mm (0.01 in)	0.3 mm (0.02 in)
Stand-off distance	950 mm (37.4 in)	900 mm (35.4 in)
Reference distance	1100 mm (43.3 in)	
Enhanced texture	3.2 megapixels	
Geometry	800 000 points	
Time of acquisition	0.6 seconds	
File formats*	.OBJ, .FBX, .DXF, .STL, .VRML, .LWO, .MAYA, .HRC, .3DS	

Included Accessories

The 3D digitizer Gemini has human-oriented design, is easy to install, and may be attached to most tripods available on the market. The accessories that are included when buying a Gemini are:

- | Power cable
- | 24-v and 75-w replacement light bulb
- | Series cable
- | Firewire cable
- | Firewire card
- | USB-Series converter
- | Sturdy carrying case
- | Connection instructions
- | PCS software on a DVD
- | PCS activation dongle
- | One-year warranty on parts and labour
- | Software maintenance for one year

* : The file formats created by the Gemini may be converted to standard formats using the EM software program (sold separately)

CREAFORM

3D TECHNOLOGY AND DIGITAL SOLUTIONS

5825, rue St-Georges
Lévis (Québec) Canada G6V 2L6

T. 1.418.833.4446
F. 1.418.833.9855

www.creaform3d.com

Authorized distributor